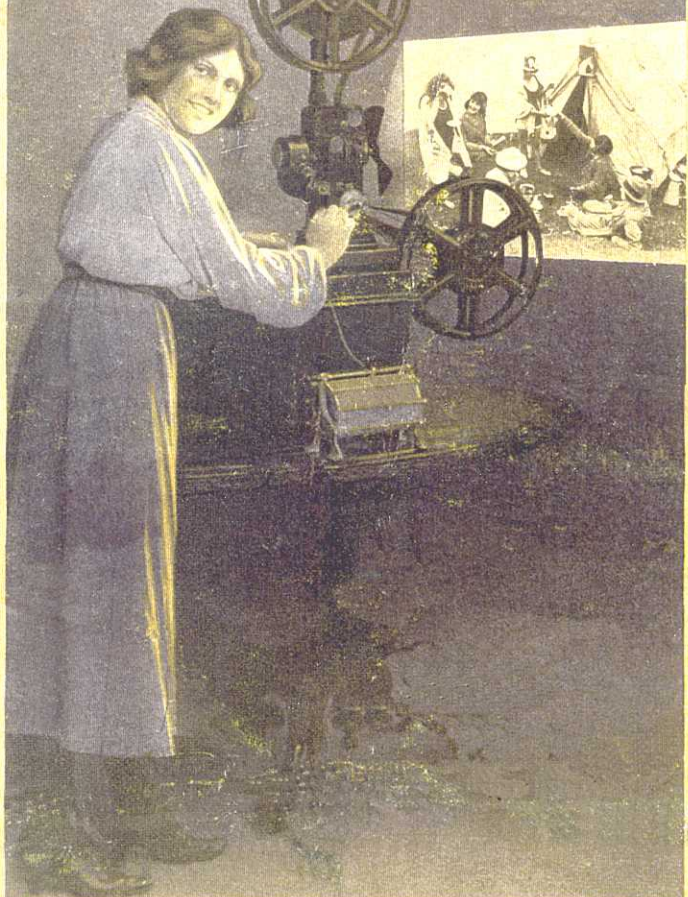


THE
CINEMA
AT HOME

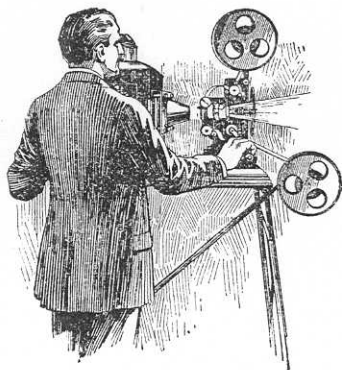


THE SHEFFIELD PHOTO CO.
HOME CINEMA SPECIALISTS
95, NORFOLK STREET, SHEFFIELD

The Cinema at Home

Some Notes on Cinematography
:: for Pleasure and Profit ::

HERE'S a new hobby, one that will give you pleasure and recreation all the year round. Run your own cinema, make your own films, and show them at home with your own projector. Think of the pleasure in store for you and your friends; the many uses you have for a Cinematograph Outfit. You will never want for subjects, your friends will willingly pose and, if necessary, act for you; your holidays will provide pictures of more than usual interest, and then you have the best and most interesting subjects of all in your children.



Film the kiddies; think of the hundreds of interesting pictures they suggest: make films of them at play; you will never tire of seeing their humorous and lovable little antics portrayed on the screen. What pleasures these records will recall when your children have grown up, and at evening, with the lights down, you go back into the years and with them live their childhood over again.

Holidays with a Cinematograph Camera are unforgettable, the living picture recalls your happiness far more effectively than ordinary snaps. You can enjoy once again the delightful trips

you made, the majestic grandeur of this or that beauty spot as it unfolded itself to your enraptured gaze.

Run your own cinema, make your own pictures and show them yourself; there is nothing difficult about it. Empire Cinematograph Cameras and Projectors have been built to fit in with amateur requirements. They are as simple as they possibly can be without sacrificing efficiency. Any one who can use a snapshot camera can take cinematograph pictures with the Empire Topical Camera. There is nothing to learn; the extra rapid large aperture lens—Aldis-Butcher $F/3.1$ —guarantees perfect results and enables pictures to be made in dull light.

There is no need to develop and print your films. Film used in the Ensign Daylight Loading Camera is developed free by the manufacturers, and a finished positive can be supplied in a few days at a few pence per foot.

The Empire Cinematograph Projector can be used anywhere by any one ; there is no risk or fear of fire. It can be made ready for use in a few moments, works off the ordinary household electric light supply, or from accumulators, and takes the standard size films.

There are two models available. Model I. is intended for use where a room can be fitted up as a cinema, in a school-room for educational purposes, or in the showrooms or private theatre of commercial or industrial corporations for sales and demonstration purposes.



The Models II. and III. are essentially for the home. They are small and compact, can be stored away in any odd corner when not in use, and, when wanted, can be set up in a few moments. Quite a good size picture, brilliant and clear, can be shown.

The Empire machines take the standard film, and there is now a library from which subjects can be hired for varying periods at low cost. This is an advantage not to be passed over too lightly by paterfamilias and those responsible for the welfare of the young, as it provides the means by which entire control can be exercised over those pictures which the younger members of the family see, and the risk of objectionable subjects is thus entirely obviated.

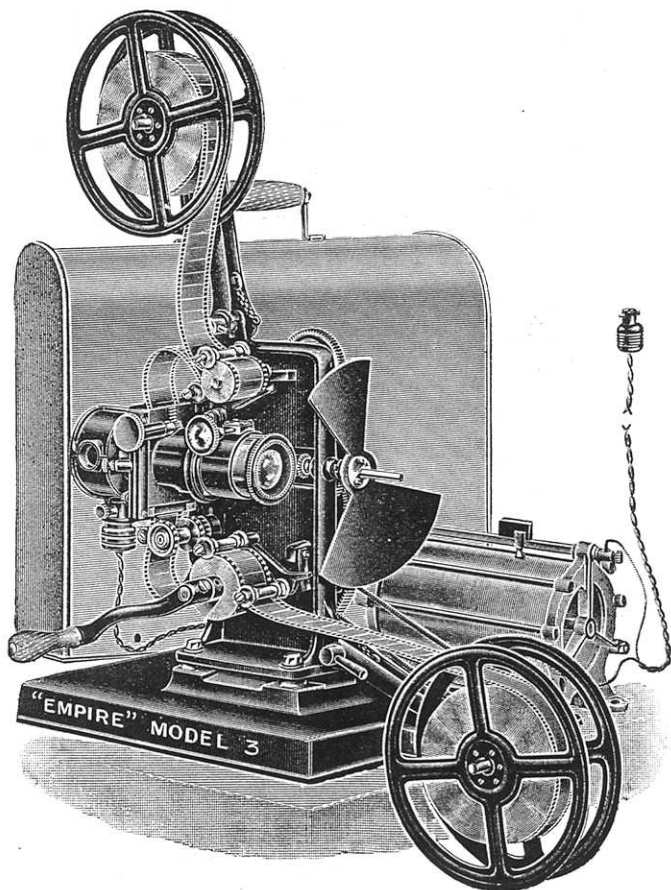
Cinematography is not only a hobby that interests and amuses, but it can be made to help in business. Already big corporations are employing the film as a means of promoting business. It helps their sales force, enables them to present their sales arguments in the strongest and most convincing manner.

Cinematography is a splendid hobby. It can be made to provide unlimited pleasure, or harnessed to help you make profits.

BUTCHER'S HOME CINEMATOGRAPHS

The "Empire."

MODEL III.—For use with Electric Light.
NEW 1922 MODEL.



This Model follows the lines of the specification on page 7, but has many little improvements in design and is fitted with a larger base and a metal cover securely fastened to base by four screws, which make it very convenient for transportation.

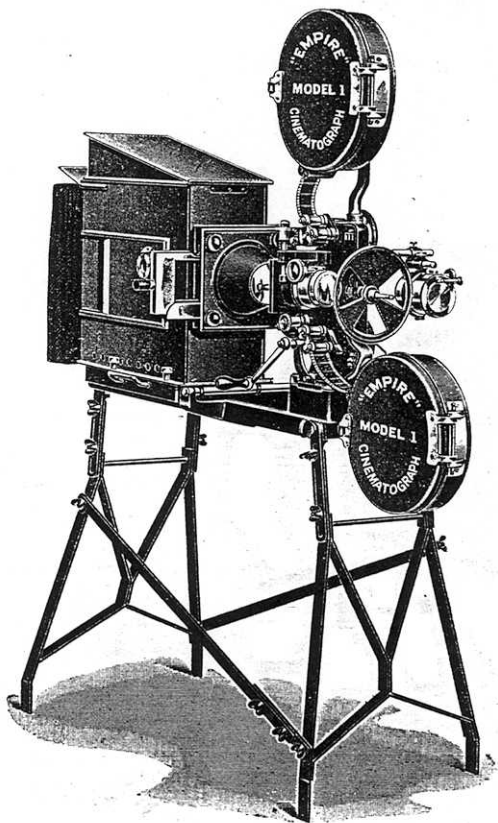
PRICE .. £18 18 0

B

BUTCHER'S HOME CINEMATOGRAPHS

The "Empire."

MODEL I.—With Standard Lamphouse.



Hire your films from the Empire Home Film Library. Catalogue and terms of hire on application.

BUTCHER'S HOME CINEMATOGRAPHS

The "Empire" Model 1.

MODEL I.—With Standard Lamphouse.

The Model I. "Empire" Cinematograph has been specially designed for use in the home, the schoolroom, and for commercial demonstration purposes. It has a large lamphouse, of sufficient size to take any of the standard illuminants, and in addition to cinematograph projection, is fitted for showing lantern slides. The machine is most simple to use, and it is possible with very little experience to project pictures as perfect as those shown in the cinema.

Everything is standard; the condenser and lens are the same as fitted to the professional machines, and the spool-holders, etc., take the standard size film.

SPECIFICATION.

BODY.—Russian iron, extra large and well ventilated, with sliding door and back curtain.

MECHANISM.—Maltese Cross movement, running in grease box, gear wheels accurately cut and meshed, sprocket wheels with solid steel spindles, jockey rollers flanged to prevent the film running off the sprocket wheels. Masking is effected by a fine adjustment screw.

AUTOMATIC CUT-OFF.—Rises and falls as the film is started or stopped; prevents the light falling on the film when stationary.

SPOOL ARMS.—Long enough to take 12-in. spools. The top spool is fitted with rewind gear.

SPOOLS.—Two 8 in. diameter, holding approximately 650 ft. film.

CONDENSER.—Four-inch Meniscus and Bi-Convex in well-ventilated brass cell.

CINE LENS.—Standard size $1\frac{3}{4}$ in. diameter, interchangeable tube form. Rack and pinion focussing jacket.

LANTERN SLIDE LENS.—10 in. focus, in rack and pinion focussing jacket.

CASE.—Each machine sent out in packing case, which is convenient for storing when not in use.

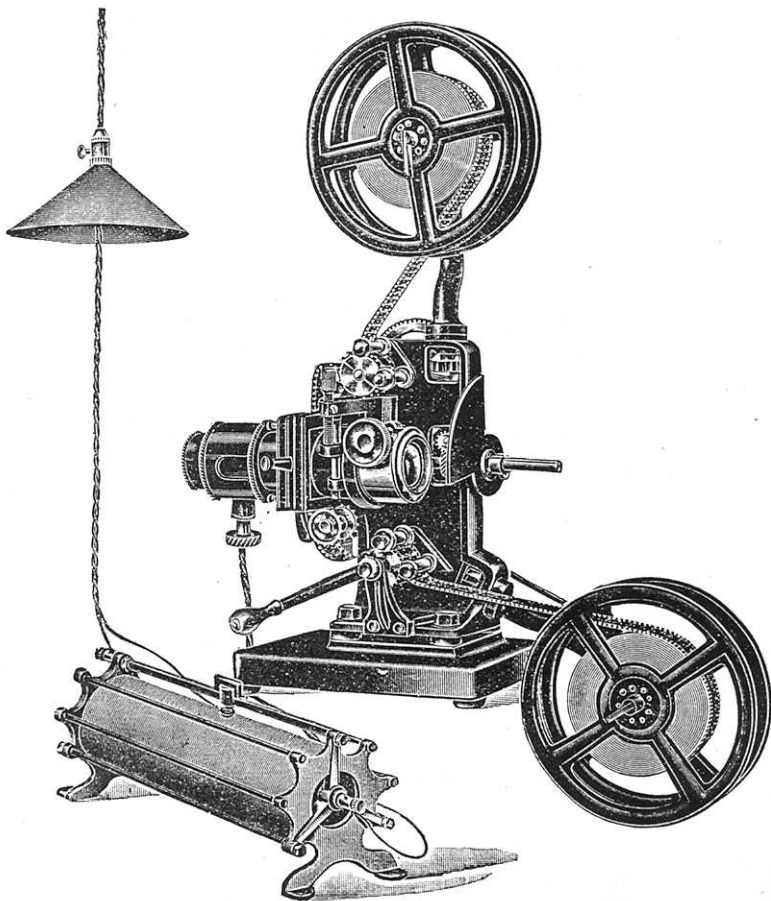
PRICES.

	£	s.	d.
Complete (without stand and fire-proof boxes)	21	0	0
Adjustable iron legs for fitting to baseboard, making a strong serviceable stand which can be adjusted for height or tilted	3	3	0 B
Extra spools, 8 in.		5	0
Fireproof spool boxes for 8-in. spools per pair	2	10	0
Extra spools, 12-in.		7	0 A
Illuminants. The "Klimax" Parallel Arc Lamp	3	15	0
The "Empire" Arc Lamp, No. 9	6	0	0

BUTCHER'S HOME CINEMATOGRAPHS

The "Empire."

MODEL II.—For use with Electric Light.



Hire your films from the Empire Home Film Library. Catalogue and terms of hire on application.

BUTCHER'S HOME CINEMATOGRAPHS

The "Empire."

MODEL II.—For Electric Light.

The current is obtained either from the house supply or from accumulators. This forms an ideal home cinematograph; it is compact and portable, and as the light is always centred, ever ready, it gives a picture 5 to 6 feet wide, according to the distance the machine is placed from the screen.

The Model II. "Empire" is standard in every way, and there is a library of films from which interesting subjects can be hired at a nominal cost.

SPECIFICATION.

The mechanism and general details are identical with those specified on p. 5 for the "Empire" Model I. There is no lamphouse, and the lantern slide attachment is not supplied. The additional features are as follows:—

ELECTRIC SUPPLY FOR HALF-WATT LAMP.—The price includes a resistance wired to break down the ordinary house current to feed the small high-power lamp provided. When ordering state voltage of circuit.

LAMP.—Is a 12-volt $\frac{1}{2}$ -Watt type contained in a cylinder fitted to the mechanism and moving with the film-gate and lens for masking purposes. The lamp can be replaced instantly when necessary.

PRICES.

No.		£	s.	d.
2.	For use off the electric light supply, complete with resistance and lamp	16	16	0

MODEL II.a For Electric Light (Accumulators).

The mechanism as in Model II., the electric supply is from a set of 12-volt accumulators. These are simple to handle and give excellent results. The accumulators have been specially selected for projection purposes, and give approximately 22 ampère hours.

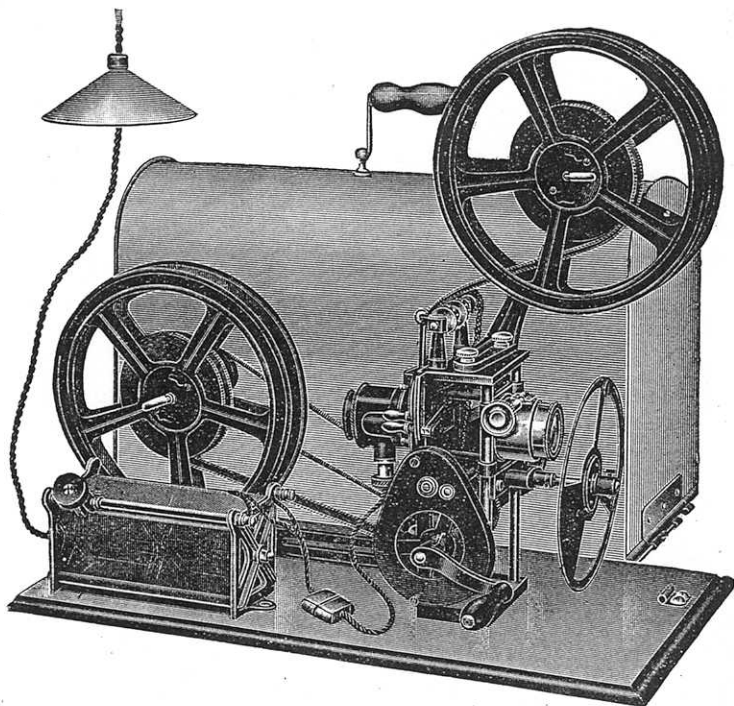
2a.*	Complete with lamp and 12-volt accumulators (not charged) in anti-sulphuric painted white wood boxes, with strap handles	22	0	0 B
------	--	----	---	-----

ACCESSORIES.

	Adjustable iron legs with iron baseboard which can be adjusted for height or tilted in any direction	3	15	0
	Extra 12-in. Spools	0	7	0 B

* Accumulators are always supplied uncharged. These can be quickly charged at a garage for a few pence.

Model E.—For use off the Household Electric
Light Supply.



The Model E Portable Home Cinema.—Is absolutely safe, easy to operate—self-contained, and only requires connecting to the household electric supply to be ready for use.

It takes the standard size film.

Hire your films from the Empire Home Film Library. Catalogue and terms of hire on application.

Model E.—For Electric Light.

MODEL E. For Electric Light.

SPECIFICATION.

MECHANISM.—Is of very substantial design, the main structure being composed of cast-brass frame reinforced with steel columns beautifully machined and finished. Accurately cut and well-proportioned gears, protected where near operator, with external flywheel grooved for motor drive if required, the Maltese Cross and intermittent sprocket being adjustable by eccentric bushes easily accessible. Spool arm for carrying top reel of film is detachable for transport, and is provided with rewinding gears, while the bottom spool arm moves through extension slot for the same purpose. The whole mounted on a wood base occupies a space of 21 x 13 in. for table use.

FILM GATE.—This is of the hinged type and carries the lamphouse half-watt lamp illuminant and condenser systems.

MASKING.—Is effected by easily accessible lever moving in conjunction with film gate, lamphouse, whereby the optical centre is maintained.

SPOOL ARMS AND REWINDER.—Spool arms are detachable and are provided with spindles to take 12-in. spools. The top arm is fitted with enclosed gears for rewinding film.

ELECTRIC SUPPLY FOR HALF-WATT LAMP ILLUMINANT.—This can be made by breaking down main supply through the resistance supplied with the outfit. Suitable resistances for any voltage can be supplied.

COVER.—Each machine has its well-finished metal dome-cover which attaches to wooden base by a bolt at each end, and is complete with carrying handle.

PRICES.

	£	s.	d.
Model E Projector, complete with Two Spools, Cine. Lens, Resistance, Electric Wiring, Plug and Lamp Adapter ..	16	16	0 B

Model EA. For Electric Light (Accumulators).

General construction as in Model E. Electric supply by a set of 12-volt accumulators. These are thoroughly efficient and simple to handle and give approximately 22 ampère hours.

	£	s.	d.
Model EA, complete with Electric Lamp and 12-volt Accumulators (not charged) in anti-sulphuric Painted Box with Strap Handle ..	22	0	0

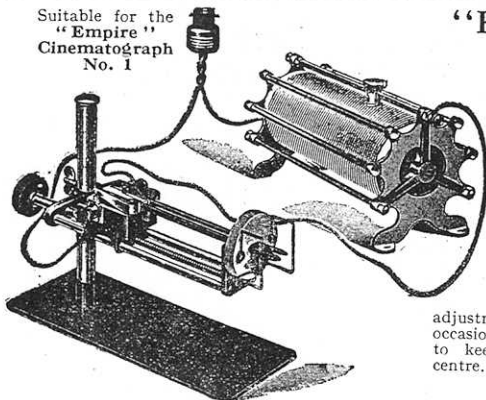
ACCESSORIES.

Extra Spools, 12 in.	each	7	0
Extra Gas-filled Lamps	"	5	0

When ordering please state clearly whether for use on 220 or 110-volt circuit.

BUTCHER'S ILLUMINANTS

Suitable for the
"Empire"
Cinematograph
No. 1



"Klimax" Parallel Lamp.

This lamp works off the ordinary house circuit and gives a perfect light, which throws a picture of good size. The carbons are placed parallel and require no adjustment beyond an occasional feed forward to keep the light in centre.

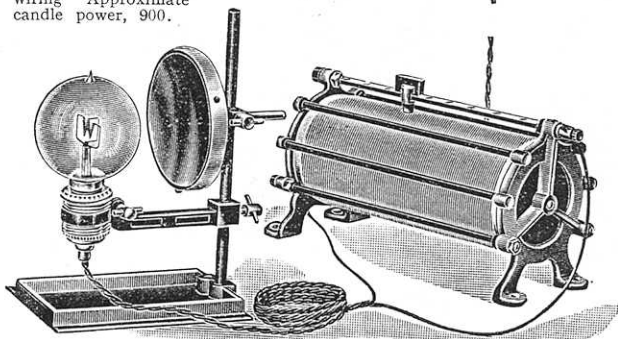
PRICE.

	£	s.	d.
Lamp, as illustrated regulating resistance, 100 to 250 volt, flexible wire with connection for house supply, 1 pair carbons, complete in wood box	3	15	0
Lamp only	2	15	0 A
Carbons, per 12 pairs		6	0

When ordering state whether required for Alternating or Direct Current.

Primus Half-Watt Outfit.

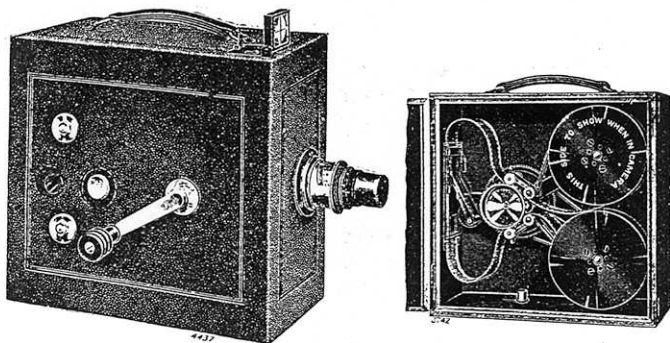
An excellent outfit for projection, gives an intense light which when correctly centred is distributed by a special mirror giving a well and evenly illuminated screen without trace of filament image. Does not generate excessive heat and can be used on ordinary house wiring. Approximate candle power, 900.



Prices.

	£	s.	d.
½-watt Lamp outfit, reflector, cast-iron tray, variable resistance, 12 feet flex and plug	4	10	0
Ditto, ditto, with mechanical tray	6	0	0 A
Extra lamps		12	6

The "Ensign" Daylight Loading.



The "Ensign" Daylight Loading Cinematograph Camera is an entirely new idea that brings the making of moving pictures within the reach of the amateur photographer. The Camera, which is made of mahogany and covered in leather, is loaded in daylight, and when the spool is finished the film may be posted to the factory, where the negatives are developed free of charge. All the inconvenience of dark-room loading, of spool boxes and developing of great drums have been abolished.

PRICES—Camera complete with Lens as specified.

	£	s.	d.
The "Ensign" Daylight Loading Cinematograph Camera, with "Aldis-Butcher" Anastigmat, Lens, F3·1	29	10	0
Do., with "Cooke" Anastigmat Lens, F3·1	31	0	0 B B
Leather Case, lined velvet, with handle and shoulder straps, lock and key, Takes Camera and two spare Spools of Film	2	15	0

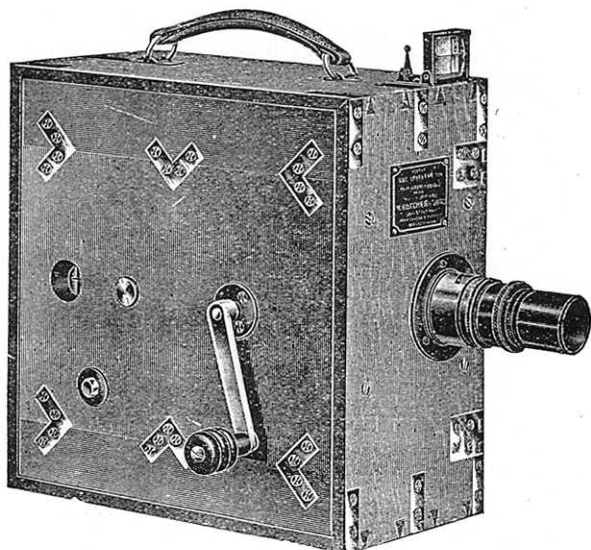
DAYLIGHT LOADING SPOOLS OF "ENSIGN" CINEMATOGRAPH FILM, including cost of development.

25 ft. each	7/6	75 ft. each	20/3 B B
50 ft. ,,	14/3	100 ft. ,,	26/3

Spools carry the right to Free Development, and may be posted to us or mailed direct to Austin Edwards, Ltd., Warwick. Positives from the negatives can be supplied at a nett price of 3½d. per foot run.

Extra Receiving Spools for 50 to 100-ft. lengths	each	3/6 B B
--	------	---------

The Williamson Type 4 Topical.



Colonial Model—extra brass-bound.

The Williamson Type 4 answers all the requirements of those who want a simple effective and moderate price camera for taking films of local interest. It is substantial in every respect—light, compact and unobtrusive.

The up-to-date Professional photographer specializing in animated portraiture will find in this camera all that is required. The lens—an Aldis-Butcher Anastigmat F/3.1—gives perfect definition—and the mechanism works smoothly and easily, ensuring rock-steady results.

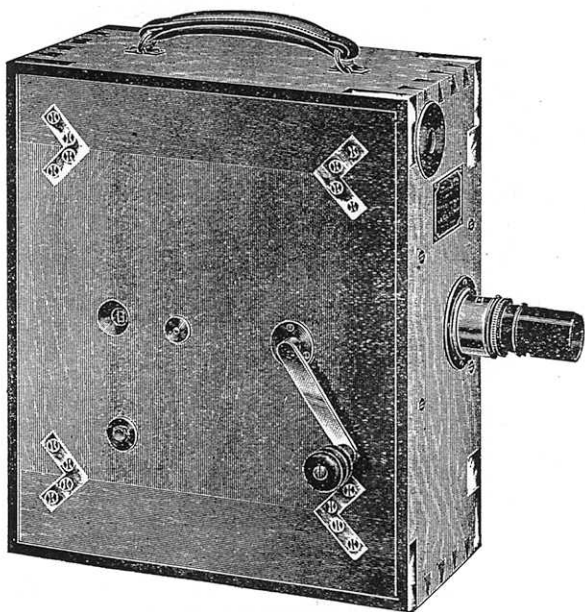
PRICES.

	£	s.	d.	
With Film Boxes for 100 ft. Film	26	0	0	B
Colonial Model, brass-bound ditto	28	5	0	

ACCESSORIES :—

Leather Carrying Case	3	0	0	
Spare Film Boxes	1	10	0	

The Williamson Type 7.



This model is similar in design to the Type 4, but has been produced to meet the demand of those requiring a camera of a slightly more ambitious design and with a greater film capacity. The case is of teak, well polished and brass-bound, and there is an enclosed "tunnel form" view finder. It is in every respect a perfect camera for those who specialize in topical work; its film capacity—200 feet—is just right, and weight and bulk have been kept down to the minimum consistent with durability.

PRICES... Camera with two spool boxes and lens.

	£	s.	d.
The "Topical" Camera. Type 7, with Aldis-Butcher Anastigmat, F/3.1	35	0	0

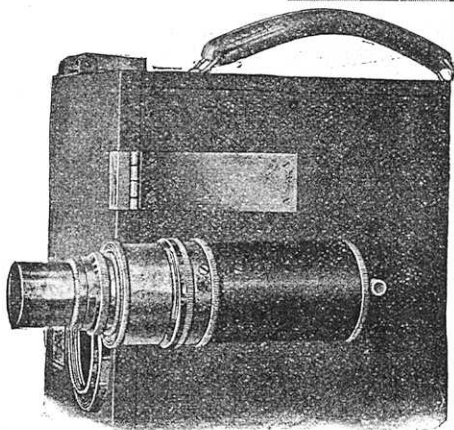
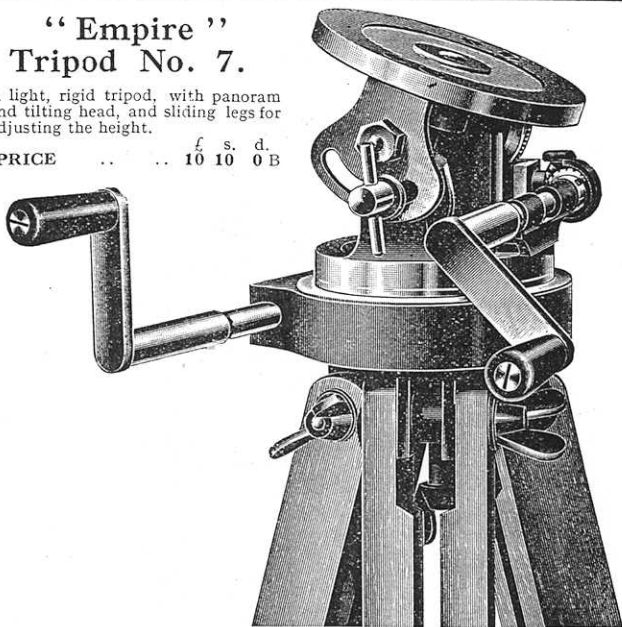
ACCESSORIES.

	£	s.	d.	B
Leather Case, lined velvet, with handle, straps and buckles, to take Camera and two extra boxes	3	15	0	
Spare Film Boxes	1	15	0	

**"Empire"
Tripod No. 7.**

A light, rigid tripod, with panoram and tilting head, and sliding legs for adjusting the height.

PRICE £ 10 s. 10 d. 0 B

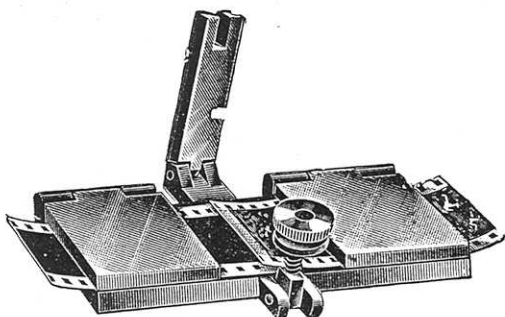


**Williamson's
Focussing
Finder.**

For use with "Topical" cameras. A practical device for accurately focussing consists of an oxidized brass tube for attaching to camera. The lens is removed from the camera front and screwed into the finder when, after the object has been accurately focussed, the lens without altering the adjustments is removed and placed into the camera: it is now set for the correct distance.

PRICE, complete with wedge fitting £2 10 0 B

“ Empire ” Film Mender.



A Film Mender is a necessary part of every cinematographer's outfit as by its means breaks can be repaired neatly, quickly and strongly.

MODEL I.

Pocket size, made in solid brass, with spring arm 12/6 B

MODEL II.

A solid and substantial Mender for professional use. Ensures the neatest joins 22/6 B



Film Cement.

Made to a special new formula, will not wrinkle the film and makes a secure join rapidly.

Price, per bottle 1/6

Do., do. (specially prepared for Non-Flam Films) 1/6

Film Scraper.

A useful accessory for the joining rooms of film printers, dark-rooms and cinemas.

It comprises an accurately made “ straight ” edge and a steel cleaning tool.

By its aid the emulsion can be quickly cleaned from the edges of a join or break—and a surface prepared which will immediately take the film cement.

Made of the best steel and practically indestructible.

Price per set 3/6B

Developing and Printing Service.

We can carry out Development, Printing and Titling of Customers' Films at the following prices:—

Developing Negative 8/0 per 100 feet.

Supplying Print 3½d. per foot. N

Titles (including cost of card) from 3½d. per foot.

We require a maximum of 36 hours for despatch of finished print from time of receipt of negative by us. Films for development should be despatched under the special labels we supply free on request, and letter of advice should be sent us under separate cover. If advised by wire or 'phone, we will collect films off train at any London terminus. Fuller details of this service will be forwarded on request.

PRICES OF FILM STOCK.

Negative, perforated ready to insert in camera,

in rolls 120 feet, 165 feet or 200 feet per foot 3¼d. N

Positive, perforated and ready for printing ,, 2¼d.

When cabling add length required after code word, i.e., Negstock 1000=1000 ft. Negative Film perforated.

(Special prices for large quantities).

Home Film Library.

Established to provide a Library from which owners of the "Empire" or similar Home Cinematographs can hire for short periods, at advantageous rates, standard size films of interest—industrial, educational and comedy subjects. All the subjects have been carefully selected, and programmes can be made up that will provide entertainment for the most diverse audiences.

Catalogues and Terms of Hire on application.

USE
**CARBINE
FILM**



**IN ANY LIGHT
DULL OR BRIGHT**